

Zostera

Workboat

www.polarismarine.com.au



MAIN PARTICULARS

Design	Workboat
Year Built	2014
Flag	Australia
Survey	NSCV 2D
Class	N/A
GRT	2.26t
Max DWT	N/A
Length	7.82m
Moulded Breadth	2.31m
Moulded Depth	0.32m
Draft	0.2m
Deck Capacity	2t / m2

PERFORMANCE

Max Speed	26kt
Bollard Pull	2t
Fuel Consumption	12.5L p/h WOT

CAPACITIES

Fuel	110 L
Portable Water	200 L

DECK EQUIPMENT

Towing Hook	N/A
Towing Winch	N/A
Drum Capacity	N/A
Tugger Winch	3t
Capstan	N/A
Stern Roller	N/A

AUXILIARY

Generator	Portable 2Kva
Supply System	2 x 12V

PROPULSION & MACHINERY

Main Engines	MERCURY 4st
Power Rating	2x 80Hp
Gear Boxes	N/A
Propellers	Reduction High Thrust
Steering Gear	Hydraulic

ACCOMMODATION

Passengers	6
Air-conditioning	N/A



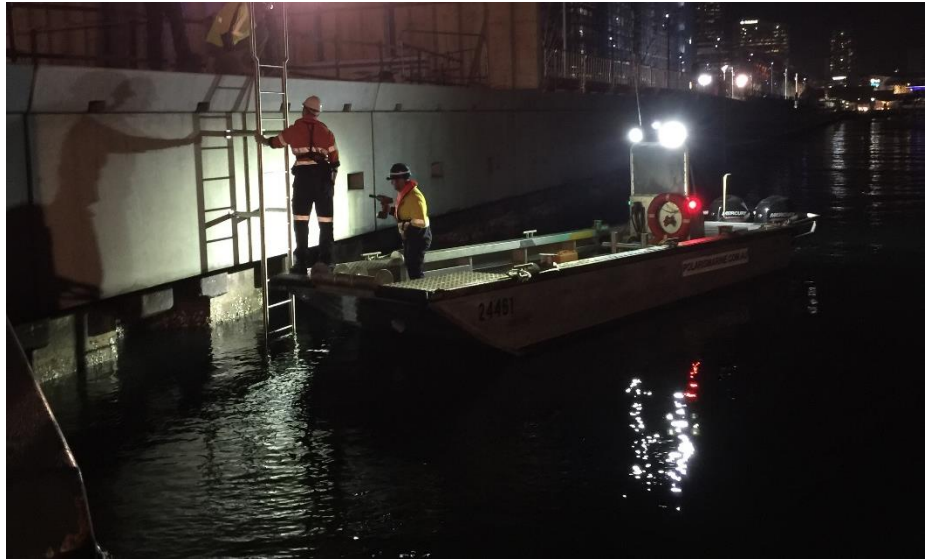
Gate 2, James Craig Road, Rozelle, New South Wales 2039
PO Box 1771, Rozelle, New South Wales 2039
T: +61 2 9563 8333 • F: +61 2 9563 8300 • E: admin@polarismarine.com.au

The particulars are believed to be correct, but are not guaranteed. Particulars given are entirely without warranty on accuracy.

Zosteria

Additional Features

www.polarismarine.com.au

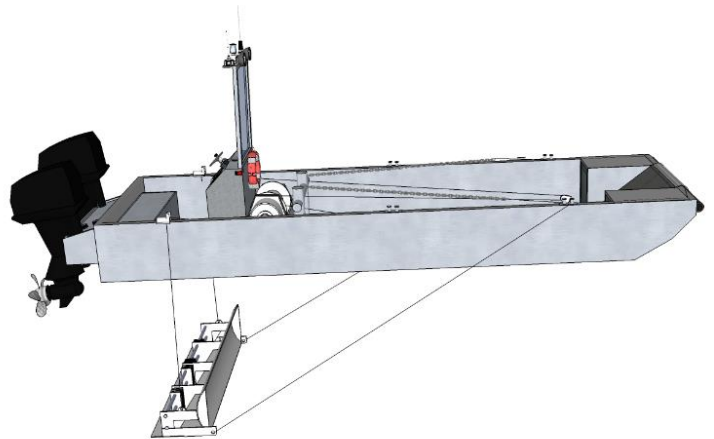


SWEEP BAR OPERATIONS

Workboat Zosteria has been modified to tow a seafloor sweep bar. The bar can be set up to operate in both forward and astern in water depths of up to 4.5mtrs. The 2.6m wide bar can have ballast weights added or removed for firmer or softer products.

Additionally for extremely soft sediments we have a Geotextile screen that can be fitted to the top side of the cutter bar to catch and carry any suspended solids that may travel over the bar whilst towing.

Of course all is road transportable for inland tasks including rivers and dams.



Gate 2, James Craig Road, Rozelle, New South Wales 2039
PO Box 1771, Rozelle, New South Wales 2039
T: +61 2 9563 8333 • F: +61 2 9563 8300 • E: admin@polarismarine.com.au